

YOU WILL NEED:

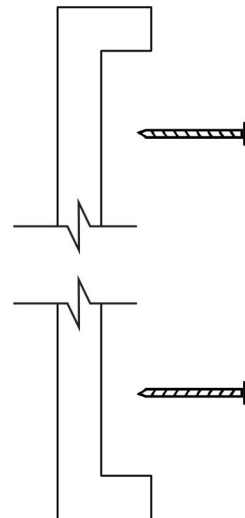


- Level
- Tape Measure
- Pencil
- Appropriate hardware for your wall type (not included)
- Drill/Electric Screwdriver
- Masking Tape

INSTRUCTIONS:

It is important that walls or plaster be completely dry before installation, as any moisture may cause the board to warp. It is the responsibility of the customer to furnish the required fasteners.

- 1** Use masonry screws for masonry construction. Determine the desired height of the board from the floor to the top of the unit. Measure down 2-1/4" from this location and snap a chalk-line along the wall. This will be the location of the bottom edge of the hanger bar.
- 2** Mark the hole locations for the screws along the hanger bar. Screws should be installed 6" in from each end of the hanger bar and evenly space the others approximately 24" apart. Drill 1/4" holes in the hanger bar at each screw location marked.
- 3** Line hanger bar along chalk-line marking the wall with hole locations as drilled in hanger bar. At each screw location marked on the wall, drill 3/16" hole for masonry screw installation in masonry walls.
- 4** Install the hanger bar. It may be necessary to shim out the hanger bar on uneven or irregular walls.

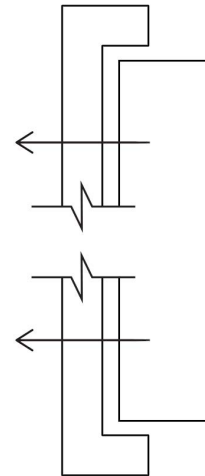


- 5** Subtract 2-1/4" from overall height measurement of unit being installed. Measure this figure down from the top of the hanger bar and snap a chalk-line. Install second hanger bar along this line.

- 6** Mount unit on hanger bar. Make all adjustments to ensure proper fit.

- 7** Manufacturer recommends the use of a construction adhesive. Apply a golf ball size spot behind the board at regular intervals.

- 8** Press board back firmly against wall at location of adhesive spots. Install screws on top and bottom of unit.



Disclaimer: ASI makes no claim that the information contained herein covers all details, conditions, variations or contingencies in connection with the installation of the board. ASI makes no representation of warranty, expressed or implied, regarding the information contained herein. ASI shall not be held liable for improper installation and ASI is not responsible for the strength of the wall or other structure to which the board is attached.

It is the customer's responsibility to:

- ensure that the wall or other structure to which the board is attached is structurally sound and can support the weight;
- reinforce the structure as required before installing the board;
- properly install the board.

Failure to do so could result in serious personal injury or death, and physical damage to the structure, surrounding finishes and the board.

