

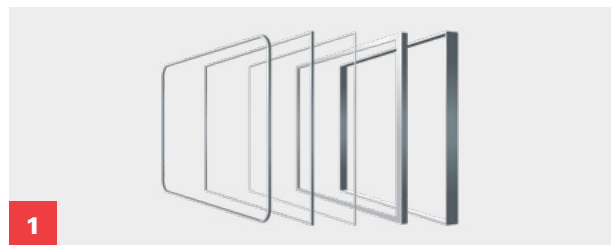
## Office Products Selection



# THE FLEXIBILITY TO CREATE VISUAL DISPLAY SYSTEMS WITH QUALITY AND PERFORMANCE FOR ANY OFFICE INTERIOR

Since 1959 our goal has been to provide visual display products and services that meet and exceed aesthetic and performance requirements. Only ASI Group designs and manufactures high quality visual display products that are easy to install and require little maintenance. All inquiries welcome and if you don't see a solution here please do not hesitate to reach out to us. Welcome to the new ASI Group—the world's leading manufacturer of partitions, washroom accessories, lockers, and visual display products. Explore the new standard for basis of design in Visual Display Products.

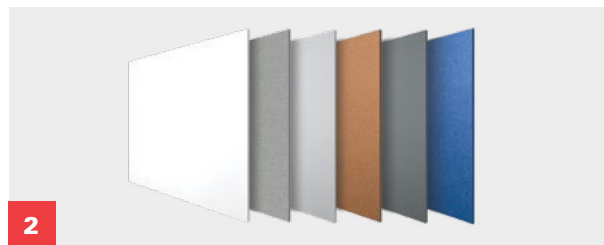
## HOW TO ORDER



### Select your Trim Series

Choose a trim series that meets your aesthetic and performance requirements.

P. 4-7 Trim Series



### Select your Surface Options

Select from a variety of writing and tackboard surface options.

P. 8-11 Porcelain Writing Surfaces

P. 14-15 Forbo® Tackboards

P. 12-13 Glass Writing Surfaces





**WE ARE LASER FOCUSED ON DELIVERING EXACTLY WHAT YOU NEED—WHERE AND WHEN YOU NEED IT.**

ASI Group's Global Reach—see how on pages 24-25.



**U.S. Green Building Council (USGBC)**  
ASI Visual Display Products is committed to continuously delivering the most environmentally friendly products to the global marketplace.



**3**

#### Select your Sizes & Options

Select from multi board construction or vertical or horizontal sliding options.

**P. 21 Multi Board Construction**



**4**

#### Select your Accessories

Choose from a variety of display and marker rails, and accessories.

**P. 23 Rails & Accessories**

#### Additional Visual Display Products

Select additional product such as directories, cases, and mobile units.

**P. 16-17 Retrofit Boards**

**P. 18-19 Mobile Boards**

**P. 20 Acoustic Boards**







## TRIM SERIES

We offer a wide selection of aesthetic options to meet any interior design and performance requirements, ranging from our innovative 9500 series—Elite Reveal floating trim, 9100 series square or radius corners, to our 9300 and 9800 series trim.

## TRIM SERIES



### **SERIES 9100**

This slim and durable framing system is offered with a square or radius corner, and is available in 5 standard sizes as well as other custom sizes.

- Square and radius frames come in a clear anodized aluminum
- Sophisticated narrow face trim
- 9/32" exposed frame



### **SERIES 9300**

A prominent, heavy-duty framing series, providing a permanent application with a retro flair. With its 1-1/2" wide face protruding 1/4" off the finished writing surface, Series 9300 units are available in a variety of finishes.

- 1-1/2" Exposed Frame



### **SERIES 9400**

Features a 2" wood face trim and L-clip installation designed to add the elegance and warmth of wood accents to any interior.

- 2" wood face trim
- Matching wood tray available



### **SERIES 9500 ELITE REVEAL**

The limitless versatility of our Elite Reveal framing series is unmatched. Our innovative 1/8" reveal comes standard on all installations and is available in any number of finishes—available in Porcelain and Forbo®. When your design calls for stylish, minimal aluminum framing, Elite Reveal creates striking, crisp, clean installations that float off your finished wall surface.

- Minimal Framing
- 1/8" Reveal



### **SERIES 9800**

The most popular trim series, engineered to provide a permanent, direct-to-the-wall installation, at an economical price. With its 3/4" frame, Series 9800 does not overpower the room but complements and harmonizes with modern decor schemes.

- Subtle Framing
- 3/4" Exposed Frame
- Available as a knock-down, multipanel option for customizable assembly on-site.



### **RETROFIT BOARD**

Retrofit boards can be easily mounted over previously installed framed boards without removing them. Installation can be done in minutes. This innovative board design, offers a perfect solution for covering existing boards.

- 1" aluminum trim face
- 1/4" substrate
- Factory drilled counter sunk holes



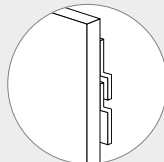
### **EDGE GRIPS WITH STAND OFFS—GLASS ONLY**

Our Edge Grips provide a stylish and simple way to mount glass markerboards to your finished wall surface. A total of four Edge Grips are installed above and below the glass markerboard, allowing it to stand off the wall.



### **HIDDEN Z-BRACKET—GLASS AND FRAMELESS PORCELAIN ONLY**

Our Hidden Z Bracket mounting system for glass and frameless porcelain markerboards provides a minimal appearance. Hidden Z Brackets offer a minimalistic look, free of any visible hardware, while securing the glass or frameless porcelain markerboard to the finished wall surface.





## WRITING SURFACE OPTIONS

# PORCELAIN SURFACES

ASI Porcelain writing surfaces are made for busy offices and boisterous classrooms, providing a super-smooth writing surface that erases like magic and will not scratch or stain for as long as it is in use—guaranteed. It is the most popular writing surface for chalkboards and whiteboards, providing superior writability, durability, and erasability.



**Shipped In**  
**48**  
**HOURS**

- Lifetime Warranty (on writing surface for the life of the building)
- Can be written on with dry-erase markers
- Optimum erasability—and easy to maintain
- Scratch, chemical, and fire resistant—will not release toxic fumes in the event of fire

### PORCELAIN COLOR SELECTION:

#### GLOSS MARKERBOARDS



White High Gloss 29      White Low Gloss 29L

*High and low gloss boards to be used with dry-erase markers.*

- Greater color contrast
- Standard is low gloss white
- Safe and clean—releases no harmful chemicals into the environment
- Available in Series 9100 Radius and Square, 9300, 9400, 9500 Elite Reveal, and 9800 pre-framed and knock-down frames

#### ULTRA MATTE PORCELAIN



Green Ultra Matte 06      Black Ultra Matte 11

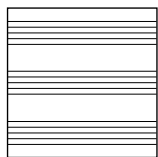
*Ultra matte porcelain for use with chalk.*

*Actual colors may vary slightly from those shown due to limitations in the printing process.*

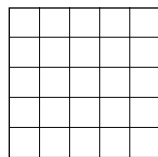




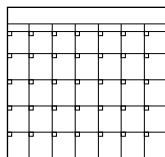
#### CUSTOM GRAPHIC BOARDS\*:



Music Lines



Graph Coordinates



Calendar



See our new  
Retrofit Boards  
on pages 16-17

\*Other custom graphics available—please call for additional information.

Sizes:	4' x 3'	4' x 4'	4' x 6'	4' x 8'	4' x 10'	4' x 12'	5' x 3'	5' x 4'	5' x 6'	5' x 8'	5' x 10'	5' x 12'
Series 9100	■ ●	■ ●	■ ●	■ ●	■ ●	■ ●	■ ●	■ ●	■ ●	■ ●	■ ●	■ ●
Series 9300	■	■	■	■	■	■	■	■	■	■	■	■
Series 9400	■	■	■	■	■	■	■	■	■	■	■	■
Series 9500	■	■	■	■	■	■	■	■	■	■		
Series 9800	■	▲	▲	▲	■	■	■	■	■	■	■	■

Series 9800 allows for having multiple tray choices at the bottom of the frame, or having the bottom section match the other three sides. A variety of display rails, flag holders, map rails, and hooks can also be accommodated on this frame.

■ = Square Corner ● = Radius Corner ▲ = Available to be shipped in 48 hours



## **FRAMELESS PORCELAIN BOARDS**

ASI Frameless Porcelain markerboards offer a frameless writing surface with defined corners and sits slightly off the wall, a sleek and minimal accent to any workspace. Frameless Porcelain boards are available in two standard sizes and are mounted using our low profile z-brackets.





- Made from durable CeramicSteel
- Magnetic
- Frameless, slim profile
- Edge painted with durable lacquer to match surface
- Available in horizontal and vertical orientations
- Class A Flame Spread Rating
- Concealed hardware
- Low profile mount with z-brackets

#### FRAMELESS PORCELAIN COLOR SELECTION:



White  
High Gloss 29



White  
Low Gloss 29L

## WRITING SURFACE OPTIONS

# GLASS SURFACES

The performance of ASI Glass Markerboards is unmatched in the industry, allowing designers and architects the ability to showcase interiors with this striking product line. Its clean lines and superior erasability are achieved using only ASI's UltraClear™, 1/4" tempered glass, also known as museum glass. ASI Glass Markerboards may be optionally specified with a backing that allows for magnetic applications when used with rare earth magnets.

### Features:

- Tempered glass at 1/4" low iron UltraClear™
- Sizes up-to 60" x 144". Custom sizes available upon request
- Custom graphics available
- Optional magnetic backing—Steel backer able to receive magnetics



**FRAMELESS GLASS**  
with edge grip stand-offs



**FRAMELESS GLASS**  
with hidden Z track bracket





## GLASS COLOR SELECTION:

### STANDARD COLOR



White 6529



A full range of colors are available upon request.

Unlimited color selection available, please contact us for pricing.

Sizes:	4' x 3'	4' x 4'	4' x 6'	4' x 8'	4' x 10'	4' x 12'	5' x 3'	5' x 4'	5' x 6'	5' x 8'	5' x 10'	5' x 12'
Edge Grip	■	■	■	■	■	■	■	■	■	■	■	■
Hidden-Z Bracket	■	■	■	■	■	■	■	■	■	■	■	■

Colors subject to change.

Actual colors may vary slightly from those shown due to limitations in the printing process.



## FORBO®

Forbo® Bulletin Board is produced from natural and renewable raw materials. A combination of oxidized linseed oil, resin, and finely ground cork gives Forbo® its flexibility and resilience. This combination results in a product with exceptional durability and a sustainable footprint.

### Self-healing properties

Its strength and resilience make Forbo® the ideal material for pin boards, notice boards, and all other surfaces where ideas and information are exchanged. The board material retains its grip and doesn't crumble like traditional soft boards as the pinholes close after extraction of the pins.

### Practical & hygienic

Forbo® does not attract dust and has bacteriostatic properties. This makes it a practical solution in classrooms and a hygienic choice in healthcare environments where "get well" messages can be pinned behind the bed.







#### FORBO® BULLETIN BOARD COLOR SELECTION:

The choice for environments where a functional, washable, tackable surface is needed.

##### Standard Colors

			
Duck Egg 2162	Potato Skin 2182	Poppy Seed 2204	Oyster Shell 2206
			
Black Olive 2209	Nutmeg Spice 2166		

##### Optional Colors

			
Blanched Almond 2186	Brown Rice 2187	Cinnamon Bark 2207	Mushroom Medley 2208
			
Hot Salsa 2210	Tangerine Zest 2211	Fresh Pineapple 2212	Baby Lettuce 2213
			
Blue Berry 2214			

All colors shown are available in 4 ft. heights.  
2182 Potato Skin, 2186 Blanched Almond, and  
2166 Nutmeg Spice are also available in 5 ft. heights.

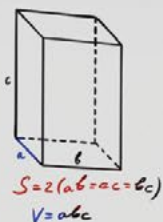
Sizes:	4' x 3'	4' x 4'	4' x 6'	4' x 8'	4' x 10'	4' x 12'	5' x 3'	5' x 4'	5' x 6'	5' x 8'	5' x 10'
<b>Series 9500 Elite</b>	■	■	■	■	■	■	■	■	■	■	
<b>Series 9100</b>	■	■	■	■	■	■	■	■	■	■	■
<b>Series 9300</b>	■	■	■	■	■	■	■	■	■	■	■
<b>Series 9800</b>	■	■	■	■	■	■	■	■	■	■	■

■ = Square Corner ● = Radius Corner

Forbo® is a registered trademark of Forbo Flooring Systems.  
Actual colors may vary slightly from those shown due to  
limitations in the printing process.

**ASI** Visual Display  
Products

asi-visualdisplayproducts.com



$$S = a^2 = \frac{d^2}{2}$$

$$P = 4a$$



$$P = a + b + c$$

$$A + B + C = 180^\circ$$

$$S = \frac{abc}{4R} = \frac{1}{2} ab \sin C$$

$$P = \frac{1}{2} p$$

$$S = \sqrt{p(p-a)(p-b)(p-c)}$$

$$S = p \cdot r = \frac{abc}{4R}$$

$$\int x e^x dx = (x-1)e^x$$

$$\int x^n e^x dx = x^n e^x - n \int x^{n-1} e^x dx$$

$$\int \ln x dx = x \ln x - x + C$$

$$\int x^n \ln x dx = \frac{x^{n+1}}{n+1} \ln x - \frac{x^{n+1}}{(n+1)^2} + C$$



$$a^2 + b^2 = c^2$$

$$a^2 = c^2 - b^2$$

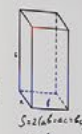
$$b^2 = c^2 - a^2$$

$$c^2 = a^2 + b^2$$

$$\sin \alpha = \frac{a}{c}$$

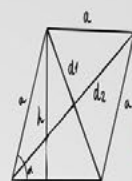
$$\cos \alpha = \frac{b}{c}$$

$$\tan \alpha = \frac{a}{b}$$



$$S = 2(ab + ac + bc)$$

$$V = abc$$



$$\frac{1}{n} \sum_{k=1}^n f\left(\frac{k}{n}\right) g\left(\frac{k}{n}\right) \approx \int_0^1 f(x) g(x) dx$$

$$S = ab \cdot \frac{d_1 d_2}{2} = \frac{1}{2} ab \sin \alpha$$

$$d_1^2 + d_2^2 = 2(a^2 + b^2)$$

$$d_1 = 2a \sin \frac{\alpha}{2}$$

$$d_2 = 2b \sin \frac{\alpha}{2}$$

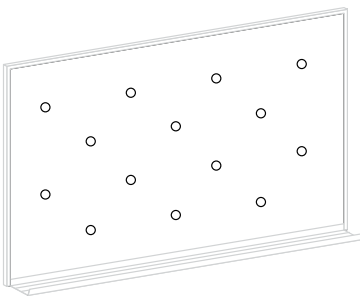




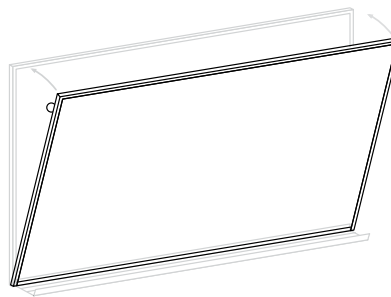
## RETROFIT BOARDS

Retrofit boards can be easily mounted over previously installed framed boards without removing them. Installation can be done in minutes. This innovative board design, offers a perfect solution for covering existing boards.

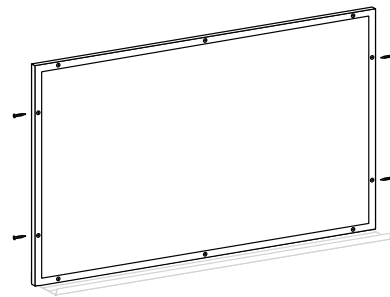
### INSTALLATION



Prepare the surface of the existing board by thoroughly cleaning it of dirt, dust, or grease. Apply construction adhesive to the surface of the existing board in golf-ball size amounts every 16" in height and every 24" in length.



Position the new board carefully over existing board, and press firmly in the locations of the adhesive.



Install the self-tapping screws (supplied with the board) through the pre-drilled holes in the trim. Clean the board thoroughly before using. See markerboard care and maintenance instructions.

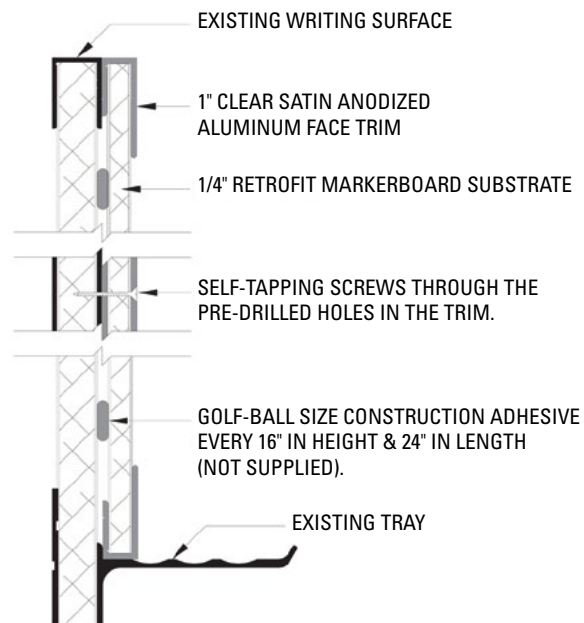
See a complete installation video at [asi-visualdisplayproducts.com](http://asi-visualdisplayproducts.com).

### DETAILS

- Face panel: Polyvision e3 Ceramic Steel in low gloss standard or high gloss
- 1" aluminum trim face
- 1/4" substrate
- Factory drilled counter sunk holes
- To determine height, measure from the top of the existing board to the top of the existing tray
- To determine width, measure from the outside edge of the left side of existing board to the outside edge of the right side

### DIMENSIONS

Available in the following sizes:  
Width: 3' to 12'  
Height: 2' to 5'



## MOBILE BOARDS



## MOBILE REVERSIBLE BOARDS

ASI Mobile Reversible Boards are constructed with aluminum framing, heavy duty locking casters, and reinforced leg design that withstand the rigors of movement.

ASI Mobile Reversible Boards offer a double-sided, high quality, magnetic porcelain markerboard surface.

**Available in:**

- Sizes: 36x48 (Reversible or Fixed), 48x72 (Reversible or Fixed), 48x96 (Fixed only)





## **MOBILE COMBINATION BOARDS**

ASI Mobile Combination Boards offer a double-sided, high quality, magnetic porcelain markerboard surface with a fabric tackboard on the lower panel.

Mobile Combination Boards are constructed with aluminum framing and heavy duty locking casters and reinforced leg design withstands the rigors of movement.

**Available in:**

- See Fabric colors on page 20
- Combo sizes: 60x36, 60x48, 60x72 (porcelain only), 72x36, 72x48, 72x72 (porcelain only)





## ACOUSTIC BOARDS

ASI Acoustic Boards are wrapped with your choice of seven modern fabrics providing an elegant tackboard surface and sound attenuation benefits. The frameless board complements artwork, furniture and other surfaces. Made from fiberglass preformed into boards, it offers a smooth surface for flatness and uniformity, delivering excellent noise absorption properties.

### FABRIC COLOR SELECTION:

			
Eggshell 5822	Earth 5823	Wedgewood 5832	Medium Gray 5833
			
Black 5836	Cobalt 5841	Flannel 5842	

*Additional Duvaltex (Gilford of Maine) colors available, please contact us for pricing and availability.*

## WRAPPED EDGE FABRIC BOARDS

Frameless fabric edge wrapped tackboards with square corners.

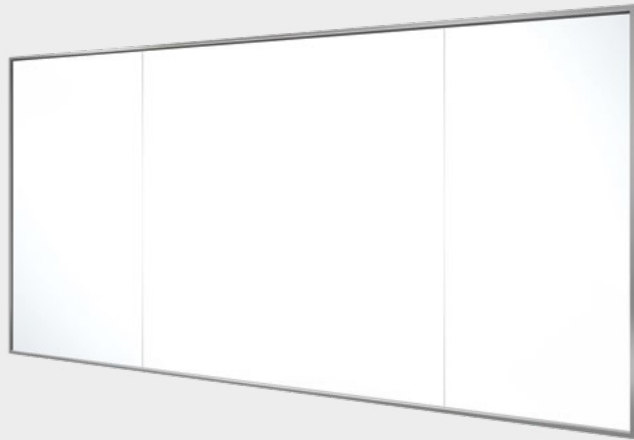
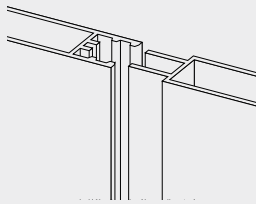
### Features:

- Z-bracket mounting brackets
- 2 Year Warranty



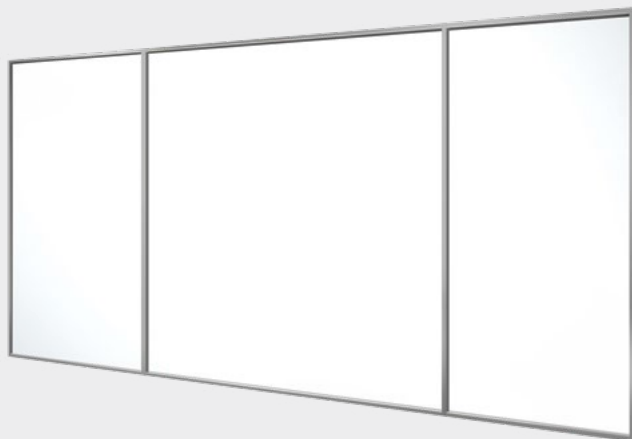
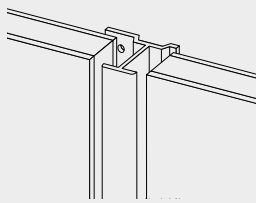
## MULTI BOARD CONSTRUCTION

### WITH SPLINE



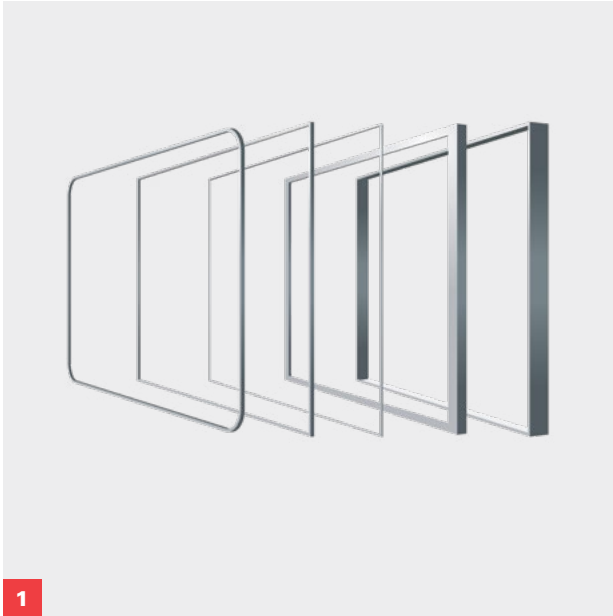
For applications where a large continuous writing surface is needed we offer markerboards that are equipped with our spline edge system. A markerboard with a spline edge can be connected to another marker board, with the reciprocal edge, by snapping the two edges together during installation. This allows for a large beautiful surface with minimal visual interruptions.

### WITH DIVIDER H BRACKET



This system allows multiple markerboards to be connected together using an H Bracket that serves as a divider between each board. This H Bracket slides over the markerboard's edges during installation.

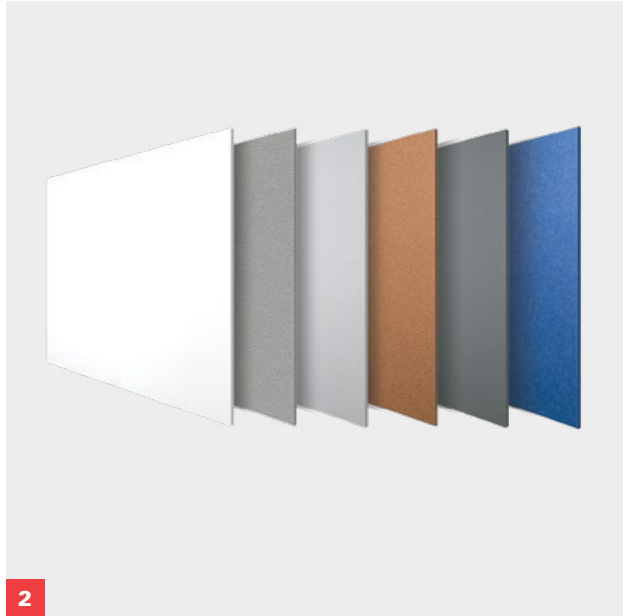
## HOW TO ORDER



1

### Select your Trim Series

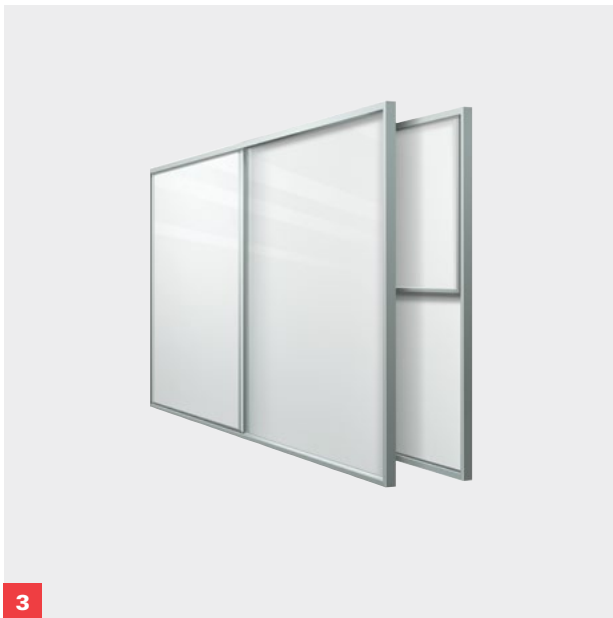
Choose a trim series that meets your aesthetic and performance requirements.



2

### Select your Surface Options

Select from a variety of writing and tackboard surface options.



3

### Select your Sizes & Options

Select from multi board construction or vertical or horizontal sliding options.



4

### Select your Accessories

Choose from a variety of display and marker rails, and accessories.



## RAILS & ACCESSORIES

### DISPLAY & MARKER RAILS

ASI offers an assortment of display rails all available with a number of accessories—map hooks, roller brackets, or flag holders.



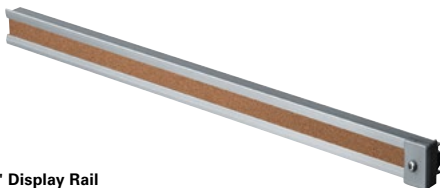
Flat Tray



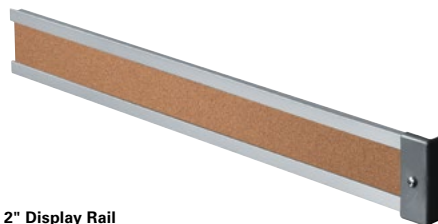
Magnetic Surface Mounted



Angled Tray



1" Display Rail

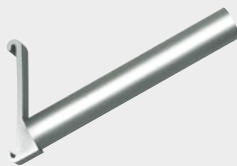


2" Display Rail

### ACCESSORIES



Flag holder for  
1" map rail



Flag holder for  
2" map rail



Map hook for  
1" map rail



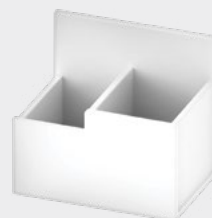
Map hook for  
2" map rail



Roller Bracket



Cloths & Markers



Caddy



Magnetics

## WHO WE ARE

The ASI Group is known for innovative products, speed to market, and the widest offering of materials and products in the industry.

Our family of companies work together with one mission in mind — “To make our customers successful by providing value that exceeds price and an excellent service experience.”



**1** Glendon College, Toronto, Ontario



### TOILET PARTITIONS

ASI offers the most comprehensive collection of plastic, plastic laminate, phenolic, Integrated Privacy™ stainless steel, and powder coated partitions from one source.



### WASHROOM ACCESSORIES

The world's leading manufacturer of commercial washroom accessories. We offer the most comprehensive selection of washroom accessories available anywhere.

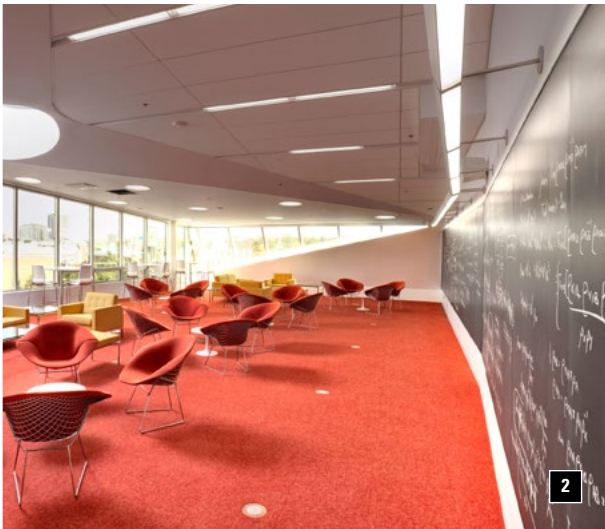


**WE ARE LASER FOCUSED ON DELIVERING EXACTLY WHAT YOU NEED—  
WHERE AND WHEN YOU NEED IT.**

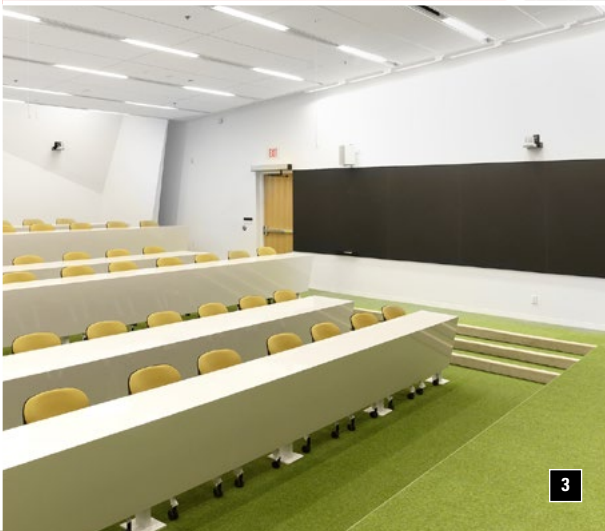
With operating units and offices in the USA, Canada, Australia, Europe, Middle East, and Mexico, along with sales in more than 50 countries, our ability to serve is not limited by geography.

Our broad scope helps meet the needs of healthcare, education, office, and retail buildings, as well as airports, stadiums, government offices, cultural centers, and hotel/restaurant operations.

**SALES IN OVER 50 COUNTRIES**   **385+** DOMESTIC AND INTERNATIONAL SALES REPRESENTATIVES   **1,000+** HIGHLY SKILLED EMPLOYEES   **>1.3** MILLION SQ. FT. MANUFACTURING & OFFICE FACILITIES



2



3



4

**2** Perimeter College: Sky Room, Decatur, Georgia

**3** Perimeter College: Sky Room, Decatur, Georgia

**4** Glendon College, Toronto, Ontario



**STORAGE SOLUTIONS**

A wide range of colors and materials including steel, solid plastic, and Compact HPL lockers.



**VISUAL DISPLAY PRODUCTS**

Through constant research, innovation, and development, we design and manufacture high quality visual display products that are easy to install and require little maintenance.





Phone: 330.308.8667  
Web: [asi-visualdisplayproducts.com](http://asi-visualdisplayproducts.com)

© 2025 ASI Visual Display Products