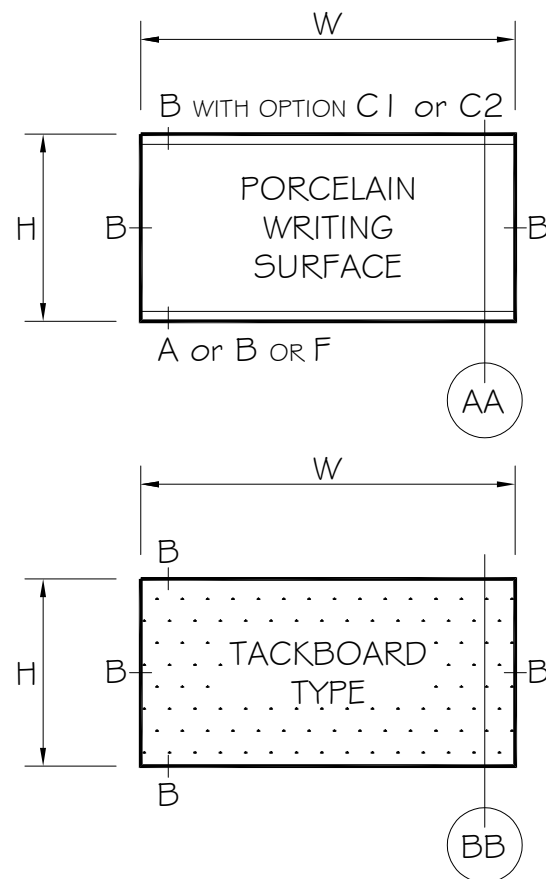
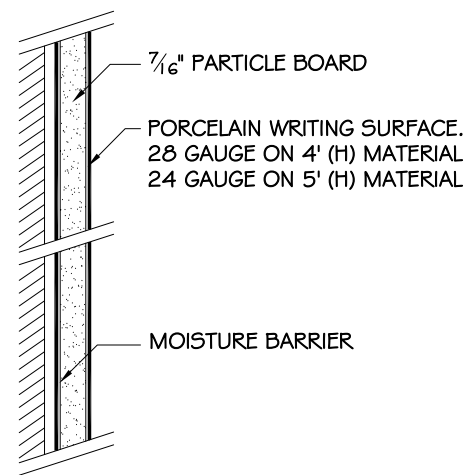


ELEVATIONS:



SECTION AA

MARKERBOARD
OPTION 01



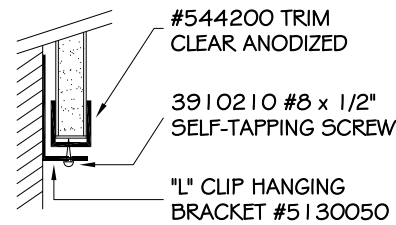
OPTIONAL COLORS:

- 29 WHITE HIGH GLOSS
- 29L WHITE LOW GLOSS
- 11 BLACK MATTE CHALKBOARD
- 06 GREEN MATTE CHALKBOARD

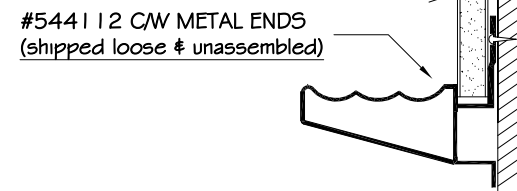
BOTTOM DETAIL

OPTIONAL LOWER FINISH DETAIL

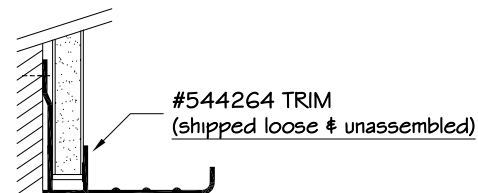
REGULAR TRIM "B":



ANGLE TRAY "A" OR:



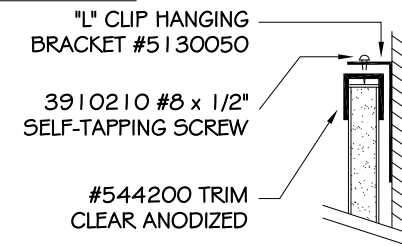
FLAT TRAY "F":



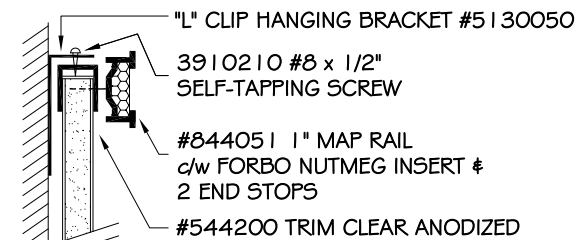
TOP DETAIL

UPPER FINISH DETAIL

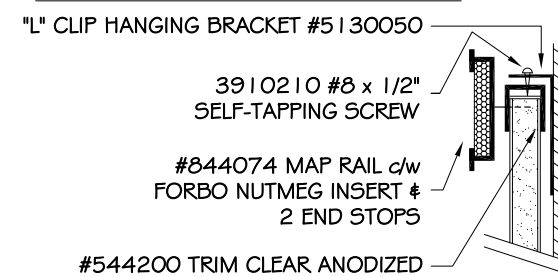
REGULAR TRIM "B":



1" MAP RAIL "C1" (OPTIONAL) OR:



2" MAP RAIL "C2" (OPTIONAL):



ALUMINUM TRIM:

SERIES 9800 "PRE-FRAMED"
FINISH: CLEAR ANODIZED
FACE TRIM: 3/4"

DESCRIPTION:

9800 SERIES "PRE-FRAMED"

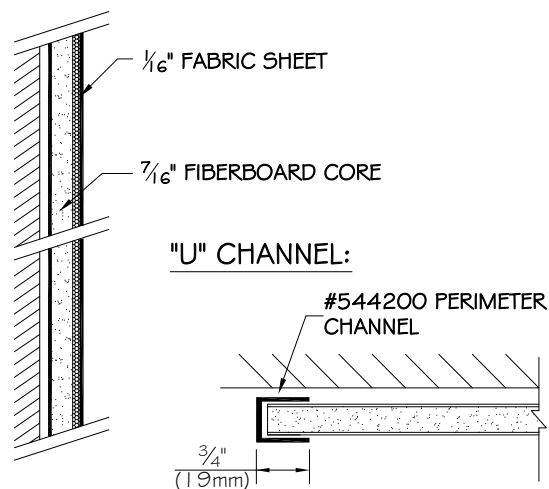
- 01 - WHITE OR CHALKBOARDS
- 02 - FABRIC TACKBOARDS
- 03 - FORBO TACKBOARDS
- 04 - NATURAL CORK TACKBOARDS
- 05 - VINYL TACKBOARDS

OPTIONAL TRIM / MAP RAIL / TRAY:

- 01 - 4 SIDED TRIM
- 04 - 3 SIDED TRIM W/ 1" MAP RAIL + ANGLE TRAY
- 05 - 3 SIDED TRIM W/ 1" MAP RAIL + FLAT TRAY
- 10 - 3 SIDED TRIM W/ 2" MAP RAIL + ANGLE TRAY
- 11 - 3 SIDED TRIM W/ 2" MAP RAIL + FLAT TRAY
- 13 - 3 SIDED TRIM WITH ANGLE TRAY
- 14 - 3 SIDED TRIM WITH FLAT TRAY

SECTION BB

FABRIC TACKBOARD
OPTION 02

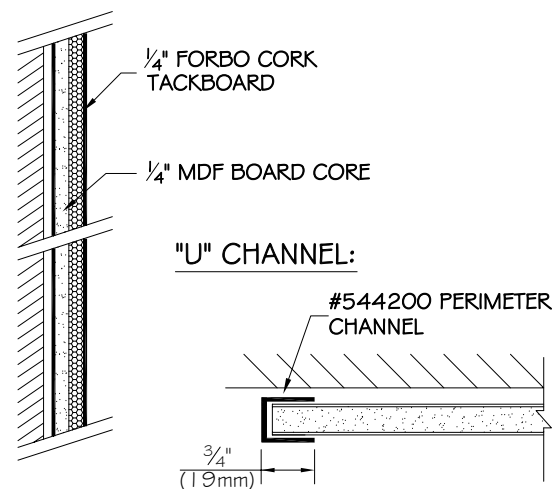


FABRIC COLORS:

- 5822 EGGSHELL
- 5823 EARTH
- 5832 WEDGEWOOD
- 5833 MEDIUM GRAY
- 5836 BLACK
- 5841 COBALT
- 5842 FLANNEL

SECTION BB

FORBO TACKBOARD
OPTION 03

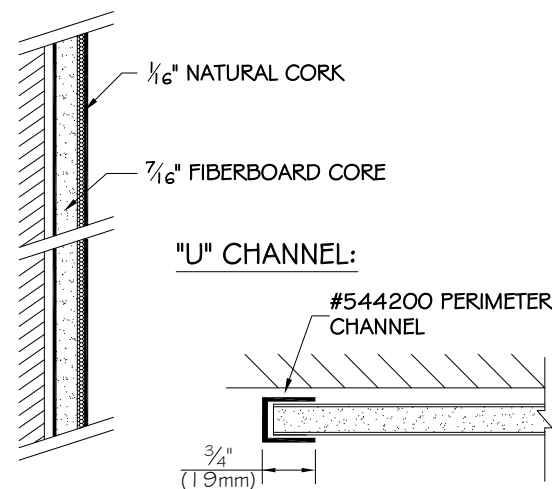


FORBO COLORS:

- | STANDARD COLORS | OPTIONAL COLORS |
|---------------------|------------------------|
| - 2162 DUCK EGG | - 2186 BLANCHED ALMOND |
| - 2166 NUTMEG SPICE | - 2187 BROWN RICE |
| - 2182 POTATO SKIN | - 2207 CINNAMON BARK |
| - 2204 POPPY SEED | - 2208 MUCHROOM MEDLEY |
| - 2206 OYSTER SHELL | - 2210 HOT SALSA |
| - 2209 BLACK OLIVE | - 2211 TANGERINE ZEST |
| | - 2212 FRESH PINEAPPLE |
| | - 2213 BABY LETTUCE |
| | - 2214 BLUE BERRY |

SECTION BB

NATURAL CORK TACKBOARD
OPTION 04

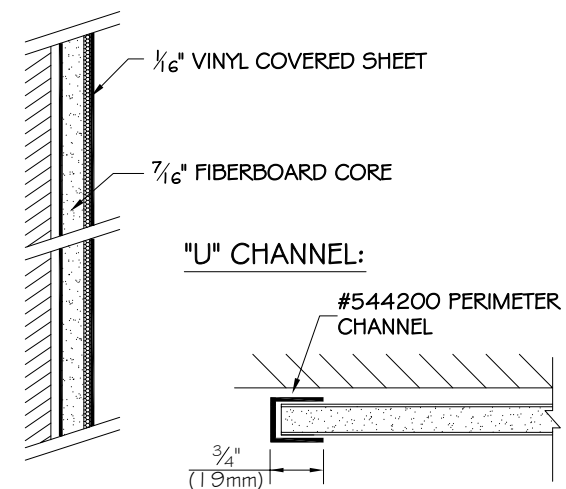


NATURAL CORK:

- FINE GRAIN NATURAL CORK

SECTION BB

VINYL TACKBOARD
OPTION 05



VINYL COLORS:

- 12 RICE
- 13 METAL
- 14 PEBBLE
- 15 COCONUT
- 16 ROYAL
- 19 FLANNEL
- 21 EGGSHELL

PRODUCT CODE:

98	0X	XX	YXX	XXX
SERIES	BOARD	TRIM	SIZE	COLOUR

MOUNTING METHOD OPTION:

- "Z" TRACK #544515
- "L" CLIP HANGING BRACKET #5130050

NOTES AND/OR APPROVAL



2301 East High Avenue, New Philadelphia
OHIO 44663
Phone: (330) 308-8667
www.asi-visualdisplayproducts.com

F:\ACADR\4\FILENAME
TDS SERIES 9800 PRE-FRAMED

PAGE NO.
1 OF 1

DRAWN BY:
U. HERNANDEZ

DATE:
04 APRIL 2025