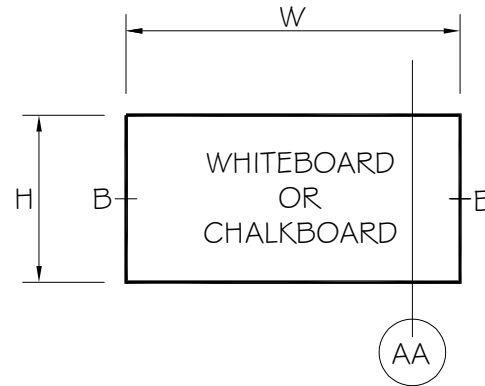


ELEVATION:



NOTE:
FOR BOARDS UP TO 8' 0" WIDE 3 CLIPS FOR TOP WILL BE PROVIDED, THEY MUST BE FASTENED INTO DRYWALL STUDS OR INTO CONCRETE USING PLASTIC PLUGS.
FOR BOARDS 8' 0" TO 12' 0" THESE REQUIRE 4 L CLIPS FOR TOP.

ALUMINUM TRIM:
SERIES 9300 "PRE-FRAMED". FINISH TO BE CLEAR ANODIZED.

DESCRIPTION:
9300 SERIES "PRE-FRAMED" WHITE/CHALK BOARD WITH 2" MAP RAIL AND ANGLE TRAY LOOSE.

PRODUCT CODE:

93	01	10	YXX	XXX
SERIES	BOARD	TRIM	SIZE	COLOR

SIZE CODE:

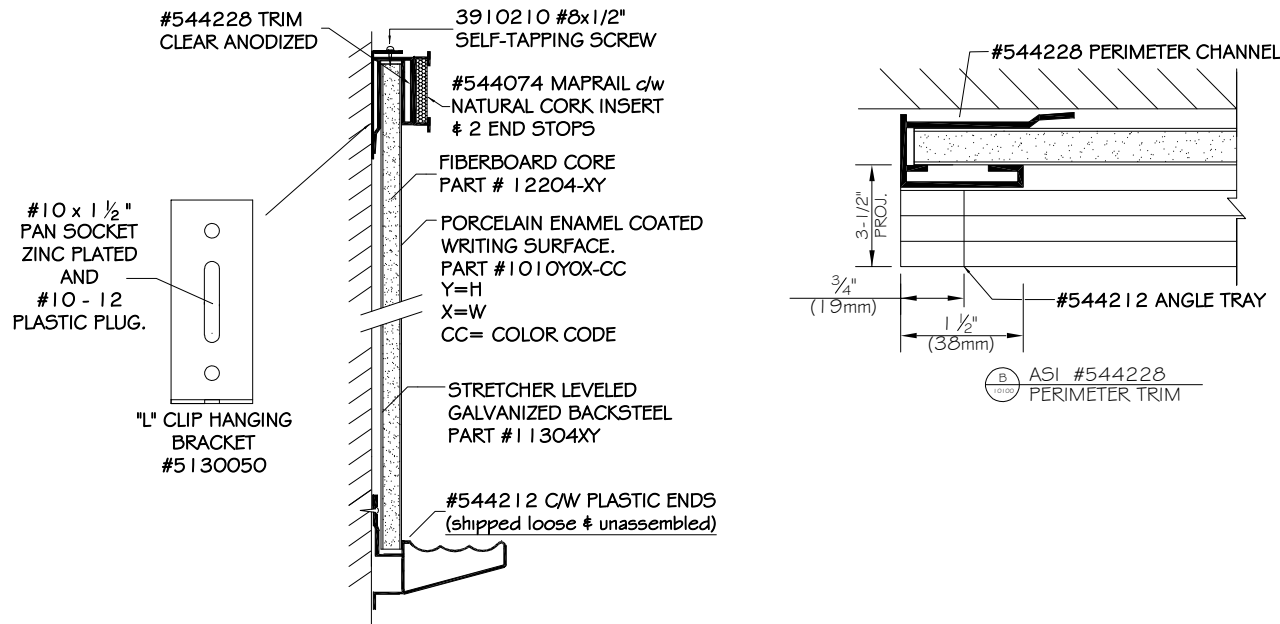
203 - 2'(H) X 3'(W)	504 - 5'(H) X 4'(W)
304 - 3'(H) X 4'(W)	506 - 5'(H) X 6'(W)
404 - 4'(H) X 4'(W)	508 - 5'(H) X 8'(W)
406 - 4'(H) X 6'(W)	510 - 5'(H) X 10'(W)
408 - 4'(H) X 8'(W)	512 - 5'(H) X 12'(W)
410 - 4'(H) X 10'(W)	
412 - 4'(H) X 12'(W)	

COLOR CODE:

29 - WHITE HIGH GLOSS
29L - WHITE LOW GLOSS
11 - CHALK BLACK
06 - CHALK GREEN

SECTIONS:

SECTION AA



NOTES AND/OR APPROVAL



2210 Dunwin Drive
Mississauga, Ontario L5L 1C7
Phone: (905) 822-4287
www.asi-visualdisplayproducts.com
estimating@asi-visualdisplayproducts.com

PROJECT NAME & LOCATION:

ARCHITECT:

CONTRACTOR:

F:\ACADR\14\FILENAME

PAGE NO.
1 OF 1

DRAWN BY:
J. UGARTE

DATE:
07 NOVEMBER 2019