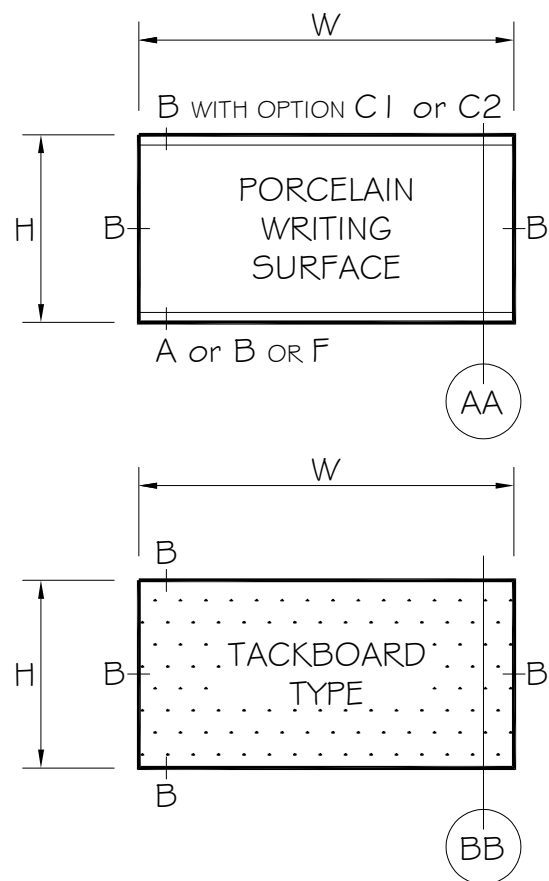
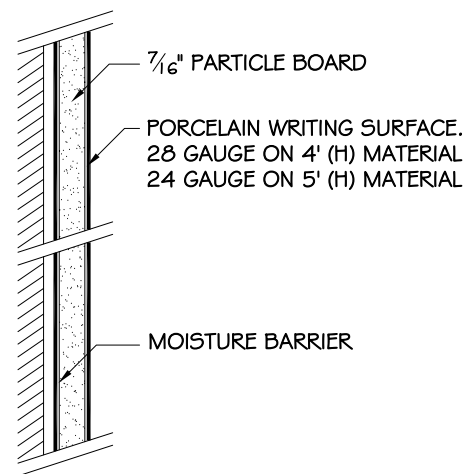


ELEVATIONS:



SECTION AA

MARKERBOARD
OPTION 01



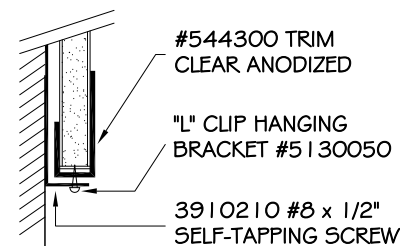
OPTIONAL COLORS:

- 29 WHITE HIGH GLOSS
- 29L WHITE LOW GLOSS
- 11 BLACK MATTE CHALKBOARD
- 06 GREEN MATTE CHALKBOARD

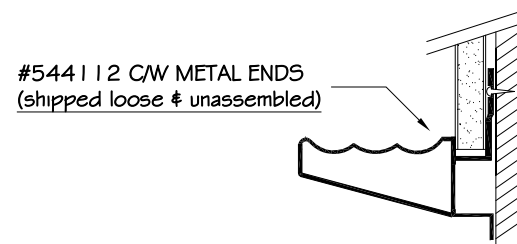
BOTTOM DETAIL

OPTIONAL LOWER FINISH DETAIL

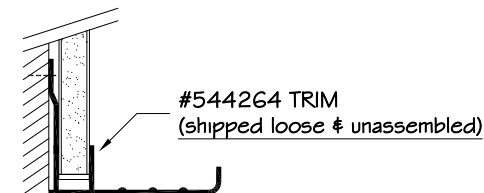
REGULAR TRIM "B":



ANGLE TRAY "A" OR:



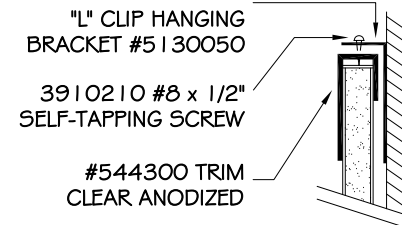
FLAT TRAY WITH RADIUS EDGE "F":



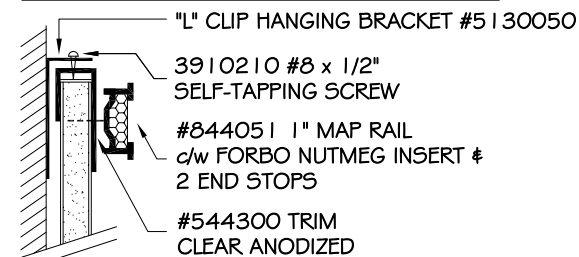
TOP DETAIL

UPPER FINISH DETAIL

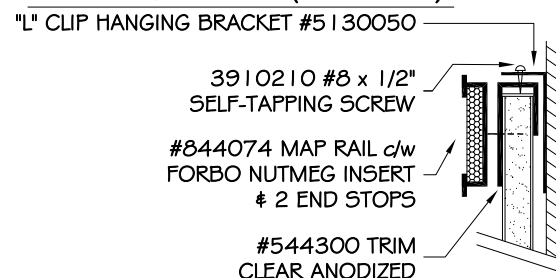
REGULAR TRIM "B":



1" MAP RAIL "C1" (OPTIONAL) OR:



2" MAP RAIL "C2" (OPTIONAL):



ALUMINUM TRIM:

SERIES 9300 "PRE-FRAMED"
FINISH: CLEAR ANODIZED
FACE TRIM: 1-1/2"

DESCRIPTION:

9300 SERIES "PRE-FRAMED"

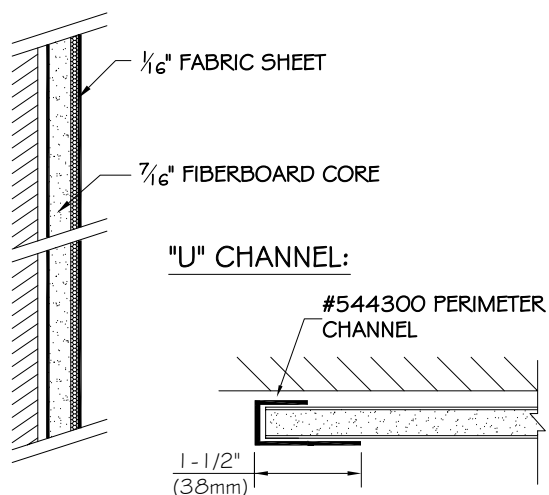
- 01 - WHITE OR CHALKBOARDS
- 02 - FABRIC TACKBOARDS
- 03 - FORBO TACKBOARDS
- 04 - NATURAL CORK TACKBOARDS
- 05 - VINYL TACKBOARDS

OPTIONAL TRIM / MAP RAIL / TRAY:

- 01 - 4 SIDED TRIM
- 04 - 3 SIDED TRIM W/ 1" MAP RAIL + ANGLE TRAY
- 05 - 3 SIDED TRIM W/ 1" MAP RAIL + FLAT TRAY
- 10 - 3 SIDED TRIM W/ 2" MAP RAIL + ANGLE TRAY
- 11 - 3 SIDED TRIM W/ 2" MAP RAIL + FLAT TRAY
- 13 - 3 SIDED TRIM WITH ANGLE TRAY
- 14 - 3 SIDED TRIM WITH FLAT TRAY

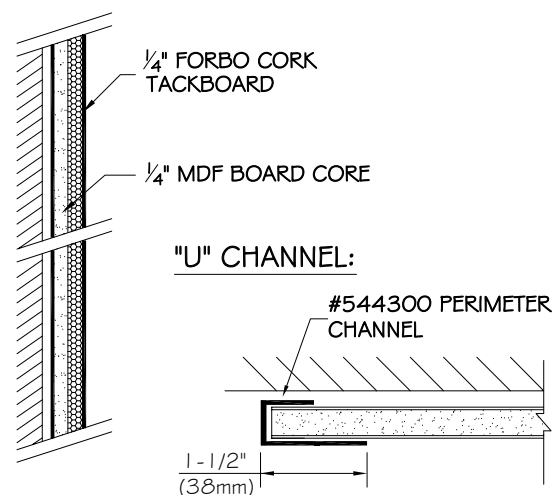
SECTION BB

FABRIC TACKBOARD
OPTION 02



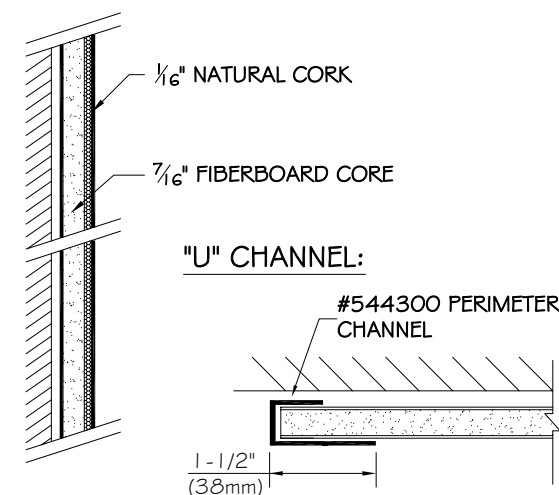
SECTION BB

FORBO TACKBOARD
OPTION 03



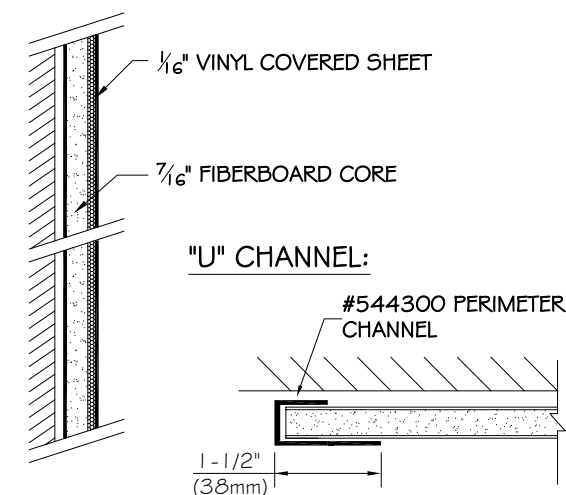
SECTION BB

NATURAL CORK TACKBOARD
OPTION 04



SECTION BB

VINYL TACKBOARD
OPTION 05



PRODUCT CODE:

93	0X	XX	YXX	XXX
SERIES	BOARD	TRIM	SIZE	COLOUR

MOUNTING METHOD OPTION:

- "Z" TRACK #544515
- "L" CLIP HANGING BRACKET #5130050

NOTES AND/OR APPROVAL



2301 East High Avenue, New Philadelphia
OHIO 44663
Phone: (330) 308-8667
www.asi-visualdisplayproducts.com

F:\ACADR\4\FILENAME PAGE NO.
TDS SERIES 9300 PRE-FRAMED 1 OF 1

DRAWN BY: U. HERNANDEZ DATE: 04 APRIL 2025

FABRIC COLORS:

- 5822 EGG SHELL
- 5823 EARTH
- 5832 WEDGEWOOD
- 5833 MEDIUM GRAY
- 5836 BLACK
- 5841 COBALT
- 5842 FLANNEL

FORBO COLORS:

- | | |
|------------------------|------------------------|
| STANDARD COLORS | OPTIONAL COLORS |
| - 2162 DUCK EGG | - 2186 BLANCHED ALMOND |
| - 2166 NUTMEG SPICE | - 2187 BROWN RICE |
| - 2182 POTATO SKIN | - 2207 CINNAMON BARK |
| - 2204 POPPY SEED | - 2208 MUCHROOM MEDLEY |
| - 2206 OYSTER SHELL | - 2210 HOT SALSA |
| - 2209 BLACK OLIVE | - 2211 TANGERINE ZEST |
| | - 2212 FRESH PINEAPPLE |
| | - 2213 BABY LETTUCE |
| | - 2214 BLUE BERRY |

NATURAL CORK:

- FINE GRAIN NATURAL CORK

VINYL COLORS:

- 12 RICE
- 13 METAL
- 14 PEBBLE
- 15 COCONUT
- 16 ROYAL
- 19 FLANNEL
- 21 EGG SHELL